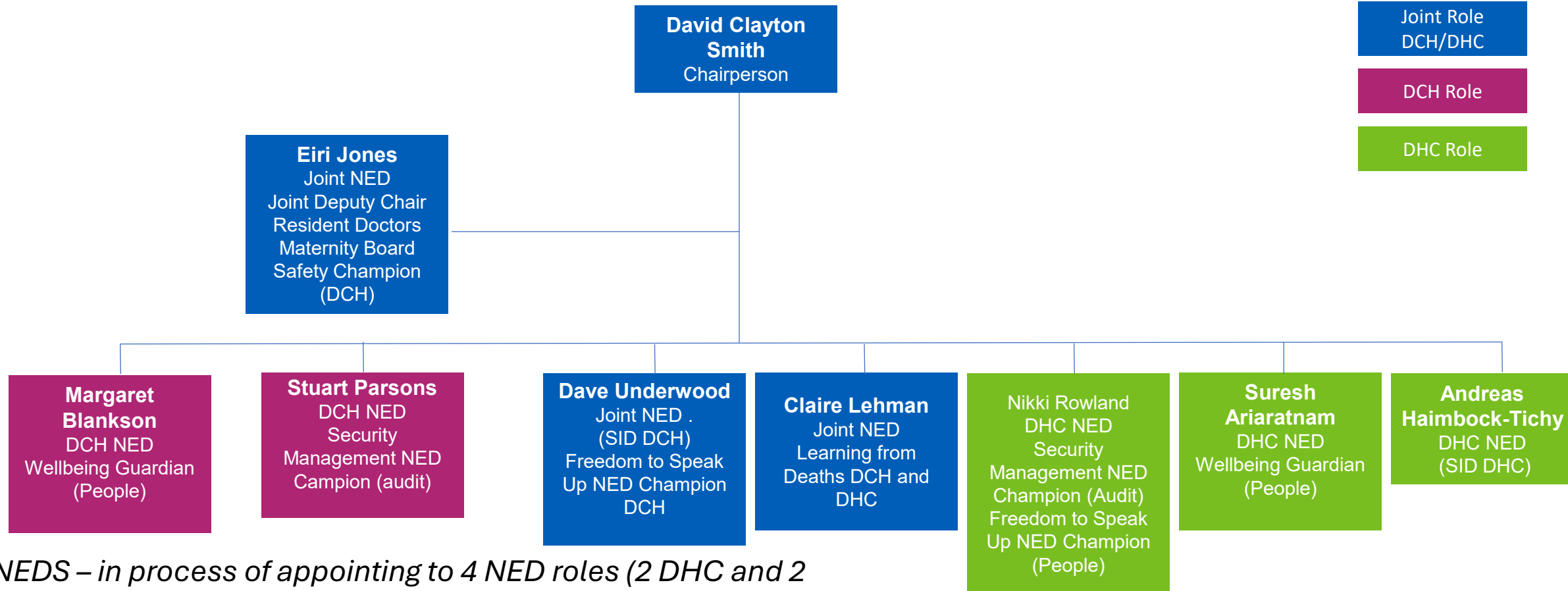


Board of Directors

DCH / DHC

April 2026

Our Non-Executive Directors



NEDS – in process of appointing to 4 NED roles (2 DHC and 2 DCH) to in post June/July 2026

Our Joint Executive Team



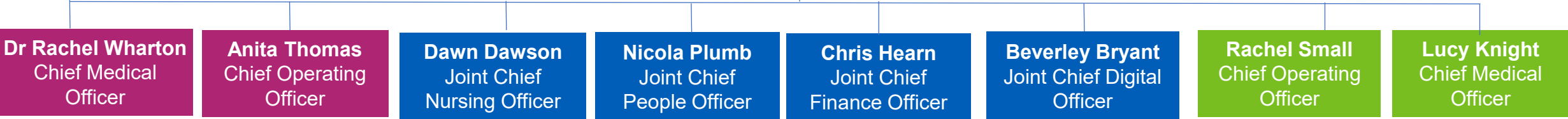
Joint Role
DCH/DHC

DCH Role

DHC Role

Matthew Bryant
Chief Executive
Officer

Jenny Horrabin
Joint Director of
Corporate Affairs



Dr Rachel Wharton
Chief Medical
Officer

Anita Thomas
Chief Operating
Officer

Dawn Dawson
Joint Chief
Nursing Officer

Nicola Plumb
Joint Chief
People Officer

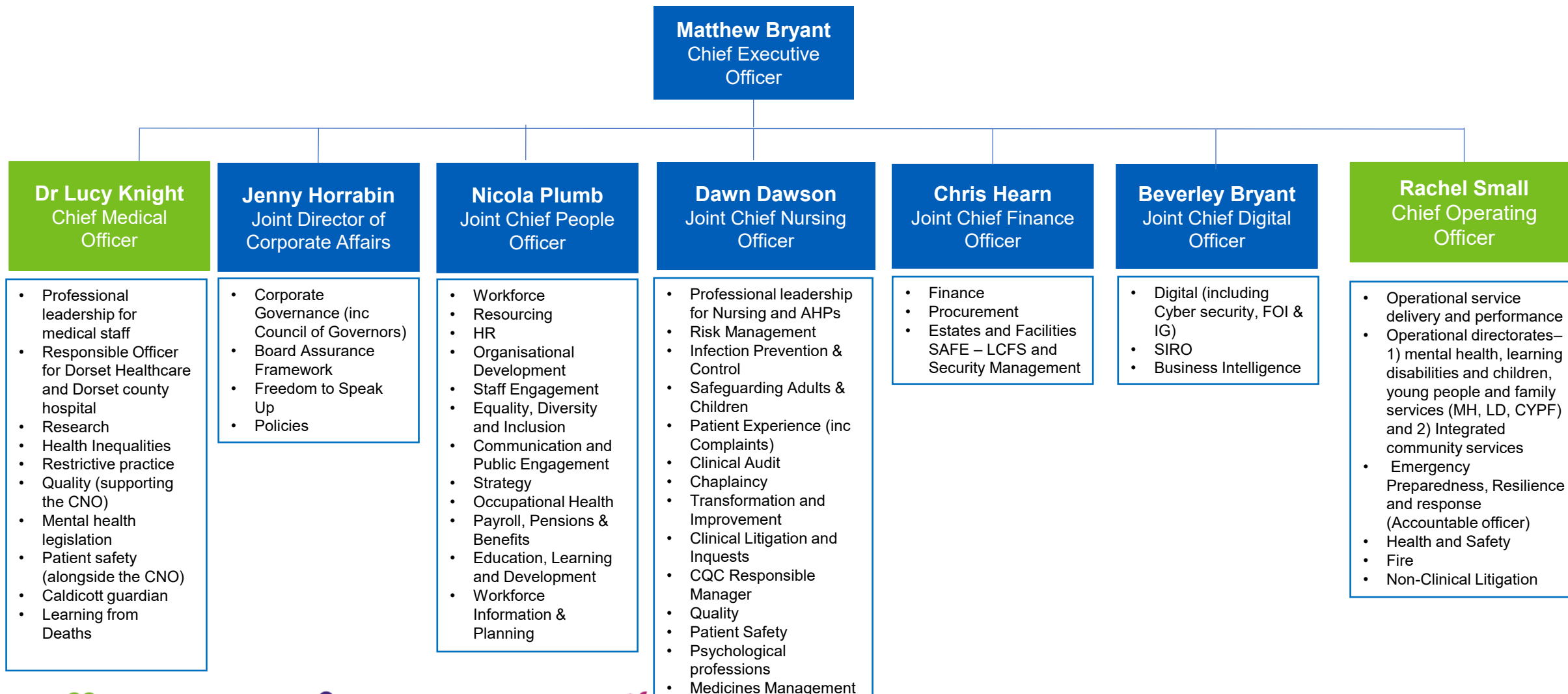
Chris Hearn
Joint Chief
Finance Officer

Beverley Bryant
Joint Chief Digital
Officer

Rachel Small
Chief Operating
Officer

Lucy Knight
Chief Medical
Officer

Our Dorset HealthCare Executive Team



Our Dorset County Executive Team



Matthew Bryant
Chief Executive
Officer

Dr Rachel Wharton
Chief Medical Officer

- Professional leadership for medical staff
- Responsible Officer for medical revalidation
- Research
- Clinical Audit
- Caldicott Guardian
- Health Inequalities
- Clinical audit
- Quality (supporting CNO)
- Patient safety (supporting CNO)
- Pharmacy
- Mental Health Legislation
- Medicines Management

Jenny Horrabin
Joint Director of
Corporate Affairs

- Corporate Governance (inc. Council of Governors)
- Board Assurance Framework
- Freedom to Speak Up

Nicola Plumb
Joint Chief People
Officer

- Workforce
- Resourcing
- HR
- Organisational Development
- Staff Engagement
- Equality, Diversity and Inclusion
- Communication and Public Engagement
- Strategy
- Education, Learning and Development
- Workforce Planning

Dawn Dawson
Joint Chief Nursing
Officer

- Professional leadership for Nursing and AHPs
- Risk Management
- Infection Control
- Safeguarding Adults & Children
- Patient Experience (inc Complaints)
- Patient and Public Engagement
- Chaplaincy
- Transformation and Improvement
- Litigation and Inquests
- Policies

Chris Hearn
Joint Chief Finance
Officer

- Finance
- Procurement
- Estates and Facilities (incl Health & Safety & Fire Safety)
- Counter Fraud
- DCH Charity
- Social Value

Beverley Bryant
Joint Chief Digital
Officer

- Digital (including Cyber security, FOI & IG)
- Digital SIRO
- Business Intelligence

Anita Thomas
Chief Operating
Officer

- Operational Performance and access
- Emergency Planning Response and Resilience
- Operational Divisions – Div U&I and Div F&S
- Security (LSMS)
- DCH Pharmacy SubCo